

CURRENT COMPUTER OPTIONS IN PHARMACOECONOMICS -- SPREADSHEETS, DECISION ANALYSIS, INTERNET, AND EDUCATIONAL TOOLS

William F. McGhan, PharmD, PhD
 PROFESSOR, UNIVERSITY OF THE SCIENCES IN PHILADELPHIA
 600 SOUTH 43RD STREET
 PHILADELPHIA, PA 19104
 PHONE: 215-596-8852
 FAX: 215-895-1100
 EMAIL: W.MCGHAN@USIP.EDU



ISPOR LINKS

- Address: <http://www.ispor.org/links.html>
- The Bayesian Institute in Health Economics & Outcomes Research
 - Canadian Coordinating Office of Health Technology Assessment
 - Cochrane Collaboration Home Page
 - The Center for Pharmaceutical Outcomes Research at the University of North Carolina
 - Emory Center for Outcomes Research
 - Health Decision Strategies for your health care decision software development needs
 - Health Economics at the World Health Organization (WHO)
 - Innovus Research Inc., a contract research organization specializing in the management of clinical and health economic trials
 - Institute of Pharmaco-Economics

WWW.ISPOR.ORG



ISPOR LINKS

- Address: <http://www.ispor.org/links.html>
- Pharmaceutical Outcomes Research and Policy Program at The University of Washington Department of Pharmacy
 - Pharmaceutical Economics and Policy (University of Southern California)
 - Pharmacoeconomics (Journal)
 - Policy Analysis Inc., a contract-research and consulting group performing health-economic and quality-of-life evaluations for a variety of pharmaceutical and biotech companies
 - University of Bayreuth list of other health economic WEB sites
 - University of Arizona Center for Health Economics and Pharmacoeconomic Research (HC-PE)
 - University of North Carolina at Chapel Hill Division of Pharmaceutical Policy & Evaluation
 - University of Texas at Austin College of Pharmacy
 - University of Texas School of Public Health, Houston Outcomes Research
 - The Weinberg Group, Inc.

WWW.ISPOR.ORG



SOFTWARE -- COST ANALYSIS -- EARLY VERSIONS

	number of patients: 1000				length of therapy: 788 weeks			
	\$ Med	\$ MD	\$ Supp	\$ Lab	\$ RB	\$ Misc	\$ Total	
SUCCESSFUL TX								
Single agent	1244581	487148	0	0	562	852857	2784268	
Dual agent	359723	102188	12742	0	188	121525	485778	
Triple agent	0	0	0	0	0	0	0	
DISCONT. TX								
Single agent	186748	52118	0	0	24	0	158862	
Dual agent	46814	13455	1899	0	14	0	61382	
Triple agent	0	0	0	0	0	0	0	
SUBTOTAL	1754786	775385	13841	0	788	963542	3508382	
Net alt to	61967	32962	0	0	0	87784	182633	
Red alt to	2239	1892	0	0	0	2712	6844	
TOTAL	1879992	1079348	13841	0	788	1073398	3718979	
Patient average	1879	1079	14	0	1	1074	3719	

[H]est/[P]reviews medication [C]mpare agents [D]istribution of patients
 [I]oy window [G]raph [L]ist [++] weeks [T+] patients

SPREADSHEETS -- CONTINUING EDUCATION

Beyond Acquisition: A Cost-Minimization Analysis to Determine and Compare the Cost of Equally Effective Medications

Read Me Before Start For more information, read the accompanying continuing education monograph.

Enter the perspective of the analysis:

Names of drugs under consideration: Drug A: Drug B:

If both drugs are used, what percentage of the time (from 0 - 100%) will Drug A be used?
 (Balance assumed to be Drug B)

Patients/year who will receive full course therapy:

A. Dosing Regimen and Monitoring

Enter the number who will receive therapy (as defined) based on with one at the

SOURCE: LORNE BASKIN [LBASKIN@BUTLER.EDU]

SOFTWARE -- ANALYTICA GROUP



DECISION TREES - SPREADSHEETS

Decision Analytic Tree

	DR	DRP	DR2	LAM
Primary Success	\$271	\$289	\$400	\$372
Primary Failure	\$102	\$82	\$423	\$74
Secondary Drug Failure	\$15	\$11	\$50	\$7
Secondary Drug Failure	\$6	\$5	\$10	\$5
Secondary Drug Failure	\$1,210	\$282	\$864	\$172



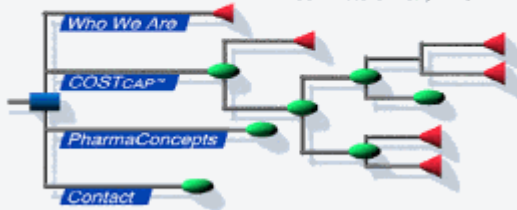
WWW.GROUPANALYTICA.COM

Reversion Success	\$151	\$44	\$110	\$42
Primary Failure	\$17	\$0	\$10	\$0
Secondary Drug Failure	\$076	\$138	\$460	\$138
Total expected cost	\$2,400.00	\$977.00	\$2,500.00	\$621.00

Options: Optimize Treatment, Rank Order Stability, Enhancements, Budget Impact Model, Print Options, Exit

WWW.GROUPANALYTICA.COM

PHARMACON



WWW.PHARMACON.COM

SOFTWARE -- BUDGET IMPACT ANALYSIS

Benefit Design Defaults

Inpatient Services
 Co-insurance: 20% (20%) 20%
 OR
 Absolute Copayment: \$ 0.00 \$ 0.00

Outpatient Services
 Co-insurance: 20% (20%) 20%
 OR
 Absolute Copayment: \$ 0.00 \$ 0.00

Prescription Drugs
 Co-insurance: 20% (20%) 20%
 OR
 Absolute Copayment: \$ 0.00 \$ 0.00

About PUDCOM

PUDCOM

PUDCOM - Peptic Ulcer Disease Costs and Outcomes Model
 PUDCOM v1.0
 All Rights Reserved - Lewis-VHI

OK

SOURCE: LEWIN-VHI

SOFTWARE -- ANALYZE ALL COSTS

Clinical & Economic Outcomes Analyzer (CLEO)

Direct Costs Indirect Costs Quality of Life Results Graph Analyze Perspectives

	Treatment A	Treatment B	Incremental Analysis
A. DIRECT COSTS: (HEALTH CARE RESOURCES)			
Prescription	\$ 1,000.00	\$ 800.00	\$ 200.00
Clinical Support	\$ 1,000.00	\$ 900.00	\$ 100.00
Dispensation	\$ 50.00	\$ 100.00	(\$ 50.00)
Administrative			
Monitoring			
Managing Adts	\$ 10.00	\$ 4.00	\$ 6.00
B. DIRECT COSTS: (NON-HEALTH CARE RESOURCES)			
Transportation	\$ 40.00	\$ 20.00	\$ 20.00
Telephone			
C. DIRECT COSTS: (BENEFITS)			
Mortality & Morbidity Benefits (paid for work in \$)	\$ 20,000	\$ 18,000	\$ 2,000
Mortality & Morbidity (losses) (paid for work in year \$)	0.0	1	-1
Salary per year	\$40,000	\$40,000	\$0.00

WWW.HEALTHSTRATEGY.COM

SOFTWARE -- PERSPECTIVES

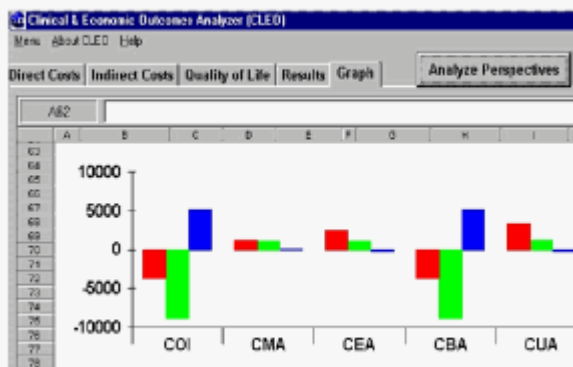
Perspectives -- Clinical & Economic Outcomes Analyzer (CLEO)

SOCIETAL EMPLOYER MANAGED CARE HOSPITAL PATIENT Return to Main Calculator

	Treatment A	Treatment B	Incremental Analysis
54. VIL CALCULATED RESULTS: SOCIETAL PERSPECTIVE			
55. (Assumes concern for direct, indirect and QALYs)			
56. COI (direct and indirect costs of illness)	\$ (3,760.00)	\$ (8,885.00)	\$ 5,125.00
57. CMA (input costs only, outcomes equal)	\$ 1,240.00	\$ 1,115.00	\$ 125.00
58. CEA (effectiveness over cost ratio)	\$ 2,480.00	\$ 1,115.00	\$ (359.00)
59. CBA (NPV) (net of benefit minus cost)	\$ (3,760.00)	\$ (8,885.00)	\$ 5,125.00
60. CUA (utility adjusted effect over cost ratio)	\$ 3,205.87	\$ 1,230.89	\$ (198.40)
61. Other:			

WWW.HEALTHSTRATEGY.COM

SOFTWARE -- GRAPHING



WWW.HEALTHSTRATEGY.COM

SOFTWARE HANDHELD ECONOMIC ANALYSIS

PHARMACO-ECONOMIC CALCULATOR

NAME: Therapy A
 DMC: 100
 DNM: 100
 INB: 100
 LPE: 10
 QALY: 40
 CPO: 8

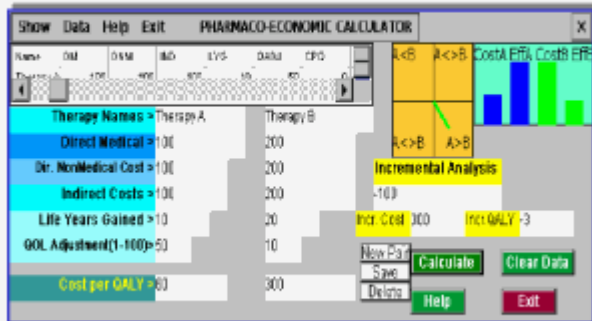
NAME: Therapy B
 DMC: 100
 DNM: 100
 INB: 100
 LPE: 10
 QALY: 10
 CPO: 1

Record # 9 of 9

New Pair Save Delete

WWW.HEALTHSTRATEGY.COM

SOFTWARE HANDHELD ECONOMIC ANALYSIS



WWW.HEALTHSTRATEGY.COM

PHYSIX - PRACTITIONER HANDHELD SOFTWARE

Address: <http://www.physix.com/support/Physix.htm>

Group I - Primary Care Specialties			
Allergy	ENT	Infectious Disease	Pediatrics
Cardiology	Gastroenterology	Internal Medicine	Pulmonary
Dermatology	General Medicine	OB-GYN	
Endocrinology	General Surgery	Ophthalmology	
Group II - Genitourinary-Related Specialties			
Infertility	Nephrology	OB/GYN	Urology
Group III - Musculoskeletal Related Specialties			
Chiropractic	Orthopedics	Podiatry	Physical Therapy
Group IV - Neurology and Psychiatry-Related Specialties			
Neurology	Psychiatry	Pain Management	Sleep Medicine
Group V - Other Specialties			
Dental Surgery	Dentistry	Home Health	Nursing

WWW.PHYSIX.COM

EDUCATION AND INFORMATION

DECISION SOFTWARE -- CRITIQUE

Address: <http://www.sis.pitt.edu/~dsl/da-software.html>

Decision Analysis Software
Decision Analysis Society

Contributed by [Mark J. Dredel](#)

This page contains a list of software that supports decision analytic approach to decision making under uncertainty.

www.sis.pitt.edu/~dsl/da-software.html

WORLD BANK -- EDUCATION

Address: <http://www.worldbank.org/health/docs/classbook1/>

Links: [Home](#) [HS Search](#) [JGSP-POP](#) [JGSP](#) [JGSP-Flow](#) [JGSP-M](#) [JGSP-Data](#) [JGSP-Dir](#) [JGSP-Map](#) [JGSP-Tools](#)

MENU	Health Sector Reform and Sustainable Financing: Introduction to the Concepts and Analytical Tools
Home	Table of Contents
HS Search	Preface
JGSP-POP	Policy Scenario
JGSP	Section 1. Efficiency
JGSP-Flow	Section 2. Equity
JGSP-M	Section 3. Measuring Efficiency and Equity
JGSP-Data	Section 4. The Basics of Markets and Health Care Markets
JGSP-Dir	Section 5. Health Care, Health Care Insurance Markets and the Role of Government
JGSP-Map	Section 6. Financing Health Care
JGSP-Tools	Section 7. Funding Health Care and Remunerating Health Care Providers
	Section 8. National Income Accounts
	Appendices
	Readings

WWW.WORLDBANK.ORG

Analytic Hierarchy Process

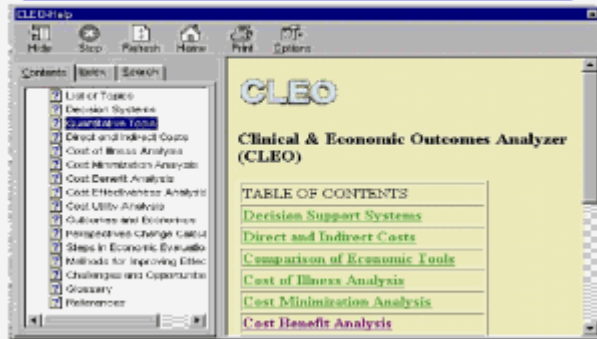
ANALYTIC HIERARCHY PROCESS

The Analytic Hierarchy Process (AHP) is a powerful and flexible decision making tool for complex, multi-criteria problems where both qualitative and quantitative aspects of a problem need to be incorporated. The AHP helps decision makers structure the important components of a problem into a hierarchical structure similar to a family tree. Then, by reducing complex decisions to a series of simple comparisons and rankings, then synthesizing the results, the AHP not only helps you arrive at the best decision, but also provides a clear rationale for the choice you made. Designed to reflect the way people actually think, the AHP was developed more than 20 years ago and continues to be the most highly regarded and widely used decision-making theory in use.



WWW.EXPERTCHOICE.COM

EDUCATION SOFTWARE



WWW.HEALTHSTRATEGY.COM

SOFTWARE TOOLS

STATISTICS -- FREE

Address: STATE -- CALCULATIONS -- HTTP://MEMBERS.AOL.COM/JOHNP71/JAVASTAT

Calculating Pages...

- Selecting the right kind of analysis
- Calculators, plotters, function integrators
- Probability distribution functions, tables, graphs, random number generators
- Descriptive statistics, histograms, charts
- Confidence intervals, single-population tests
- Sample comparisons: t-tests, ANOVAs, non-parametric comparisons
- Contingency tables, cross-tabs, Chi-Square tests
- Regression, correlation, least squares curve-fitting, non-parametric correlation
- Analysis of survival data
- Bayesian Methods
- Other statistical tests and analyses
- Specialized and discipline-specific tests and analyses
- Power, sample size and experimental design

MEMBERS.AOL.COM/JOHNP71/javastat.html

DECISION MAKING CALCULATORS

Address: http://www.fammed.ouhsc.edu/robhamm/edmcacalc.htm

Decision Calculator

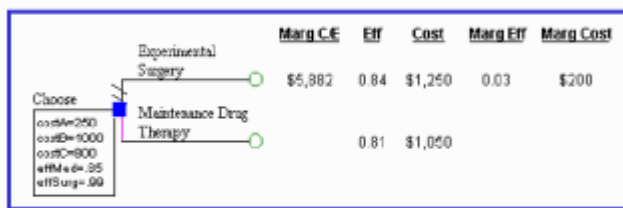
File Name (Click the "add" button, select "save as" to download)	Calculator name	Function of calculator
cdtree.xls	Decision Tree Expected Utility	You specify probabilities of branches and utilities of outcomes, it calculates expected utility.

Disease/Test Relation Calculators

File Name (Click the "add" button, select "save as" to download)	Calculator name	Function of calculator
cdcont.xls	Contingency table (test by disease) counts from probabilities	You specify base rate, sensitivity, specificity, it produces counts in 2 by 2 table plus other statistics.
cdtbl.xls	Contingency table (test by disease) prob. from counts	You put counts in cells of 2 by 2 table, it produces sensitivity, specificity, etc.

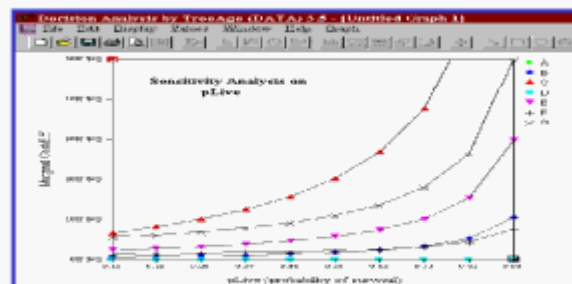
<http://www.fammed.ouhsc.edu/robhamm/edmcacalc.htm>
and <http://cebmr2.ox.ac.uk/>

DECISION TREES



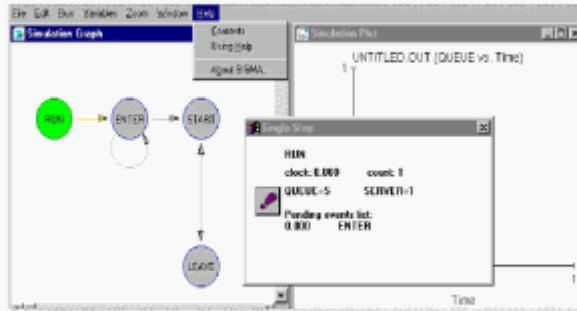
WWW.TREEAGE.COM

DECISION TREES



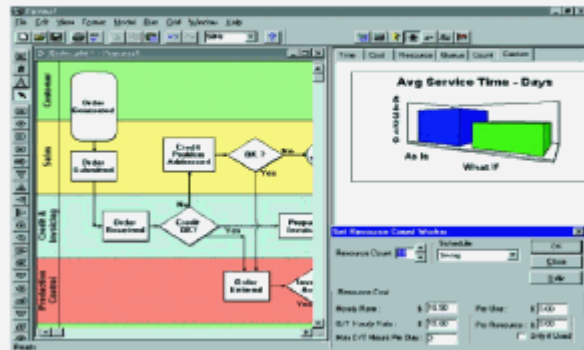
WWW.TREEAGE.COM

SIMULATIONS -- SIGMA



<http://random.mat.sbg.ac.at/links/monte.html> - good list of monte carlo software sites.

OPTIMIZATION SOFTWARE



WWW.PALISADE.COM -- OPTIMA!

META-ANALYSIS

EasyMA home page

A software for the Meta-Analysis of clinical trials

EasyMA is a software for the meta-analysis of clinical trials results.

EasyMA is a MS-DOS program with a user friendly interface developed to help physicians and medical researchers to synthesise evidence in clinical or therapeutic research.

The program was developed in the Department of Clinical Pharmacology of the cardiological hospital in Lyon - France, a teaching hospital.

The latest version is 09.

Downloading

The program can be downloaded free of charge.

WWW.SPC.UNIV-LYONW.FR/~MCU/EASYMA/

META-ANALYSIS

MetaWorks Clinical Information Experts

Products & Services

MetaMaps

The results of systematic reviews, formatted as hierarchical evidence tables. MetaMaps distill tremendous amounts of information to the level of study, patient, treatment and outcomes detail required by your project.

Meta-Analysis

The statistical combination of data from multiple studies to facilitate drawing conclusions that cannot be drawn from the results of any single study.

WWW.METAWORK.COM

CRYSTAL BALL

DECISIONEERING Our Products

WHAT IS DECISION INTELLIGENCE?

Decision Intelligence is a rigorous, comprehensive approach to improving your decision-making. This approach is a cycle of continuous improvement - examine the historical records, evaluate the uncertain environment, optimize the decisions, and then repeat the process.

Select one of Decisioneering's forecasting and risk analysis products below to see how it can help you to make more informed and lucrative decisions.

CRYSTAL BALL⁺ PR^o CRYSTAL BALL PREDICTOR CB Turbo

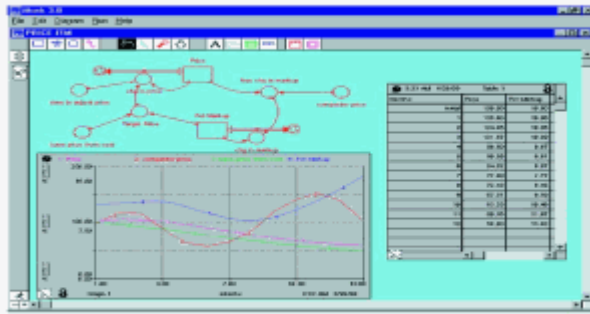
WWW.DECISIONEERING.COM

TORNADO ANALYSIS -- CRYSTAL BALL



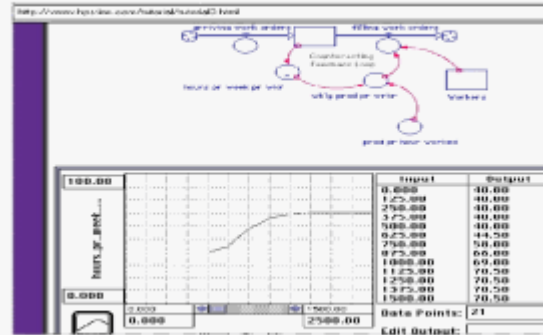
WWW.DECISIONEERING.COM

I-Think and STELLA- SIMULATIONS



www.hps-inc.com

I-Think



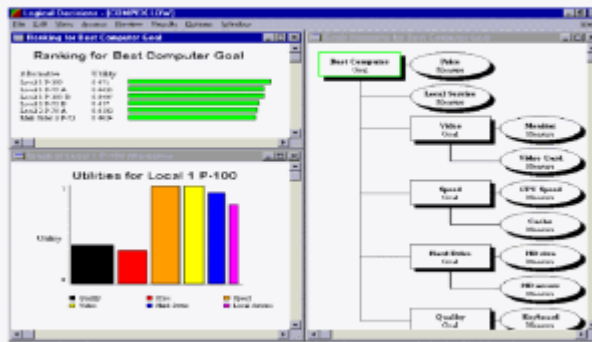
www.hps-inc.com

ANALYTICAL TOOLS

The screenshot shows the Palisade website with several product categories: Risk Analysis, Decision Trees, What-If Analysis, and Process Simulators. Each category includes a brief description and a 'Get Product' button.

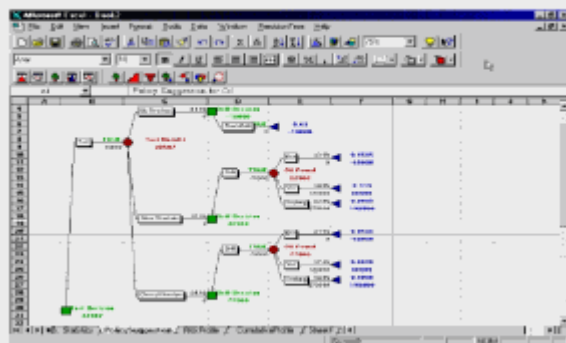
WWW.PALISADE.COM

Logical Decisions - Palisade



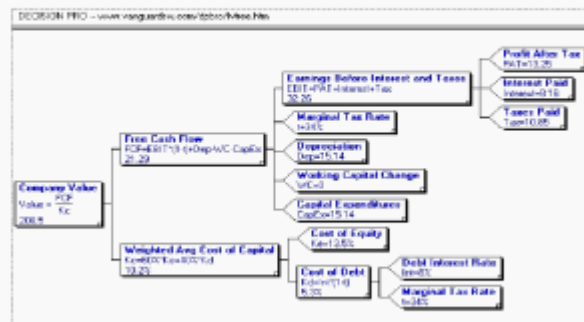
WWW.PALISADE.COM

SPREADSHEET -- DECISION ANALYSIS



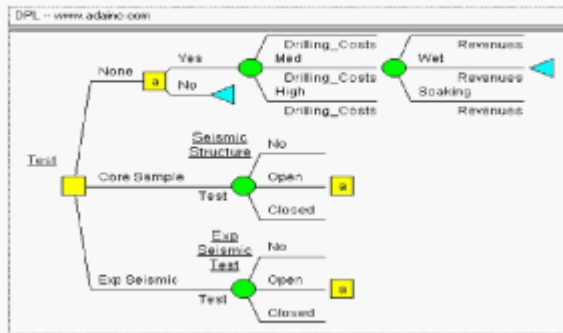
WWW.PALISADE.COM --- "PRECISION TREE"

DECISION PRO - VANGUARD



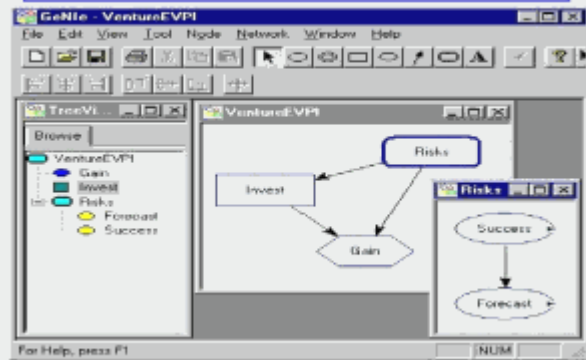
WWW.VANGUARDSW.COM

DECISION ANALYSIS -- DPL



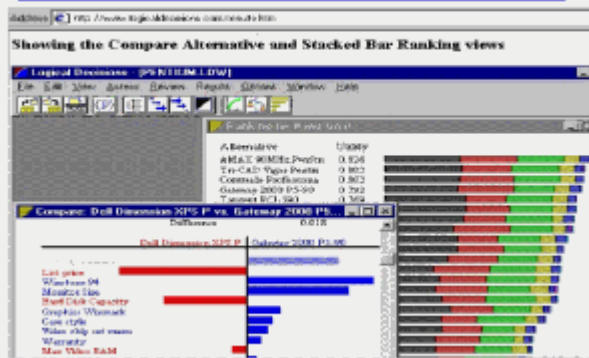
WWW.ADAINC.COM

DECISION MODELS - GENIE

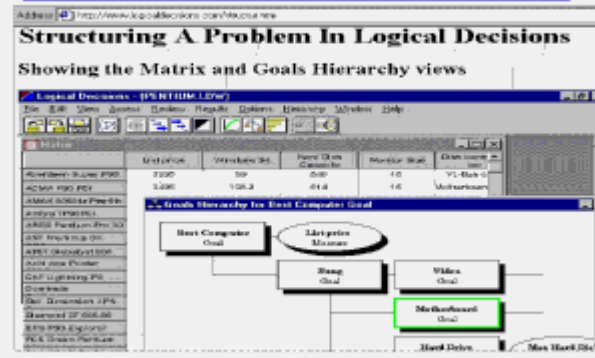


WWW2.SIS.PITT.EDU/~GENIE/

DECISION MAKING -- LOGICALDECISIONS.COM

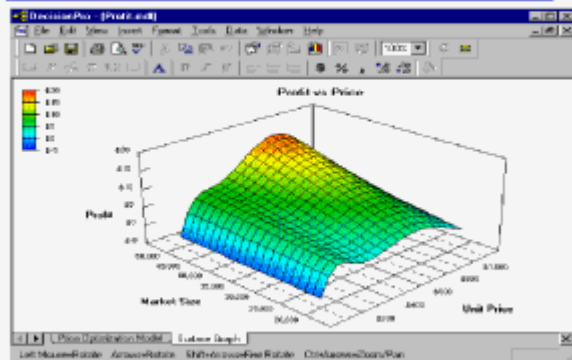


LOGICAL DECISIONS - STRUCTURING



WWW.LOGICALDECISIONS.COM

DECISION PRO - GRAPHING



WWW.VANGUARDSW.COM

EXPERT CHOICE -- PALISADE



WWW.PALISADE.COM

EXPERT CHOICE

CAPABILITIES:

Maintain a group model + individuals' models	No	No	Yes	Yes
Aggregate results from individuals' models	No	No	Yes	Yes
Perform audience response polling	No	No	Add-on	Yes
Use queries to do demographic analysis	No	No	Yes	Yes
Select individual models for aggregation	No	No	Yes	Yes
Brainstorm via networked PC's	No	No	Add-on	Yes
Set inconsistency thresholds for participants	No	No	Yes	Yes
Collect participant responses via diskette or e-mail	No	No	Add-on	Yes
Permit modeling via networked PC's	No	No	Add-on	Yes
Gather participant input via wireless keypads	No	No	Add-on	Yes
Benefit/Cost & Incremental Benefit/Cost analysis	No	No	Yes	Yes

WWW.EXPERTCHOICE.COM

EXPERT CHOICE.COM

WWW.EXPERTCHOICE.COM

	ECPro 9.0	ECPro 9.5	TeamEC Platform	TeamEC
PRODUCT COMPONENTS:				
Evaluation & Choice Module	Yes	Yes	Yes	Yes
Structuring Module	Yes	Yes	Yes	Yes
Questionnaire & Brainstorming Module	No	No	Add-on	Yes
Runtime Module	No	No	Add-on	Yes
TeamEC Fundamentals Training (3 days)	No	No	No	Yes
Network Capability	No	No	Add-on	Yes

WWW.EXPERTCHOICE.COM

DECISION MAKING -- "ERGO"

DECISION MAKING -- ERGO -- <http://www.arlingsoft.com/ergo.htm>

ERGO's Three Step Process

ERGO uses the ADEPT™ method, a unique process which breaks down the decision-making process into 3 basic steps.

Step 1. You identify all the factors in the decision and determine their relative importance. This creates a pattern of your own thinking - a decision model or Benchmark against which your decision alternatives can be measured.

Step 2. You rate how well the alternatives perform on each of the factors in the decision model.

Step 3. You quickly identify the best decision by visually comparing patterns - that of the Benchmark which represents the ideal solution, with those that represent the decision alternatives available to you.

WWW.ARLINGSOFT.COM

PREFERENCE -- CONJOINT

Address http://www.rtl.org/differences/conjoint_tools.htm

TradeOff, RTI in-house conjoint administration software, is a computer-interactive preference elicitation software tool. TradeOff uses an experimental design to generate pair-wise comparison questions for conjoint analysis. TradeOff allows collection of consumer-specific preference data directly on a computer, eliminating the need for data entry.

Choice5, RTI in-house choice-based conjoint software, is a computer-interactive preference elicitation software tool. Choice5 uses a choice-based design to generate a set of product alternatives for discrete-choice analysis. Choice5 allows collection of consumer-specific discrete choice data directly on a computer, eliminating the need for data entry.

PREFER, RTI in-house consumer preference analysis software, uses statistical techniques to evaluate the extent to which consumers value different features of new products. For example, do consumers prefer a product that costs "\$X" but must be replaced often to a product that costs "\$Y" but lasts longer? Using PREFER, the significant product characteristics can be determined.

ProSim, RTI product simulation software, simulates market shares for proposed products compared to competing products in the marketplace. ProSim also performs "what if" analysis to simulate the effects on market share of changing product features. RTI provides ProSim simulation data allowing the client to identify the combination of product features that will capture the largest share of the market.

WWW.RTLO.ORG

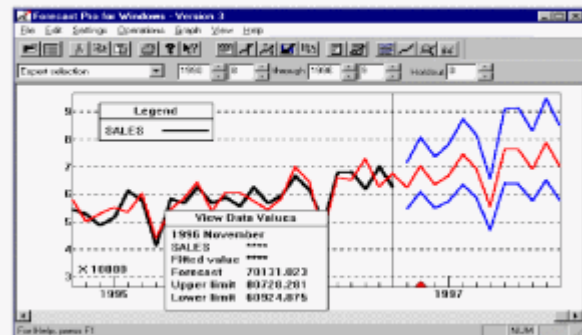
CONJOINT -- SAWTOOTH

<http://www.sawtooth.com/pages/conj1.html>

- [What is Conjoint Analysis?](#)
- [What is the ACA System for Adaptive Conjoint Analysis?](#)
- [Sensus TradeOff](#)
- [What is the CBC System for Choice-Based Conjoint?](#)
- [Sensus Choice](#)
- [Multimedia Conjoint](#)

WWW.SAWTOOTH.COM

FORECAST PRO -- PALISADE



WWW.PALISADE.COM

APPLICATIONS RUNNING ON THE INTERNET

INTERNET -- PATIENT EDUCATION

Address: <http://www.gerd.com/faq/gerd-faq.htm#1>

The Questions:

1. [What is GERD?](#)
2. [I have never heard of GERD. Is it a new disease?](#)
3. [What are some symptoms of GERD?](#)
4. [How do people get GERD? What causes GERD?](#)
5. [How many people are afflicted with GERD?](#)
6. [Who is afflicted with GERD?](#)
7. [Do children get GERD?](#)
8. [What is the difference between GERD and GORD?](#)
9. [What is the difference between heartburn and GERD?](#)
10. [What is the difference between GERD and a hiatal hernia?](#)

INTERNET INPUT AND ANALYSIS

<http://www.pharmacn.com/costcap/cost/preferences.html>

COST/OSTEOPOROSIS

Patient Preferences

This form is under development. *For demonstration purposes only.*
Functionality available via **Osteoporosis Patient Data Form**

Imagine yourself with the following conditions

Patient's rankings (utilities) for: (0.0=death, 1.0=perfect health)

0.8	breast cancer
0.9	uterine cancer
0.8	both uterine and breast cancer
0.6	short term utility for fracture
0.5	long term utility for fracture
1.0	well on estrogen therapy
1.0	well and not on estrogen therapy

WWW.PHARMACON.COM

SF-36 ON THE INTERNET

SF-36 QM: www.qmetric.com/demo/SF32.html

1. In general, would you say your health is:

Excellent Very good Good Fair Poor

The following questions are about activities you might do during a typical day. Does your health **now** limit you in these activities? If so, how much?

2. Moderate activities, such as moving a table, pushing a vacuum cleaner, bowling, or playing golf
3. Climbing several flights of stairs

During the past 4 weeks, have you had any of the following problems with your work or other regular daily activities as a result of your physical health?

4. Accomplished less than you would like
5. Were limited in the kind of work or other activities

WWW.QMETRIC.COM

DECISION TREES -- INTERNET

Health Outcomes (Utility) Analysis

Enter baseline values for model parameters.

utility, life w/o foot	8.5
utility, life w/o leg	5.
disutility of transplant	9
prob., successful treatment	0.6
prob., die from infection	0.125
prob., reject transplant	0.6
prob., die during transplant	0.02
<input type="button" value="Submit"/>	

WWW.TREEAGE.COM

DECISION TREES -- INTERNET

The model was calculated using the values you specified.

Parameter	Value
uLossFoot	6.5
uLossLeg	5.
disuTrans	9
pSave	0.6
pDie	0.125
pReject	0.6
pSurgDie	0.02

An analysis of expected effectiveness indicates the following

At the "Appropriate treatment?" node, the "Treat Foot" alternative is the optimal path. Its expected effectiveness is 7.8.

The "Transplant Foot" alternative returned a lower expected effectiveness of 7. The "Amputate Foot" alternative returned a lower expected effectiveness of 6.5.

WWW.TREEAGE.COM



QUALITY OF LIFE -- SITES

- ▶ <http://www.mapi-research-inst.com/links.htm>
- ▶ SF-36 Health Survey Web Site
<http://www.sf36.com>
- ▶ McMaster QOL Web Site
<http://www.fhs.mcmaster.ca/fhs/qolinstro.htm>
- ▶ Australian Health Outcomes Clearing House
<http://online.aru.edu.au/ceph/outcomes/whc/whc.htm>
- ▶ European Clearing Houses on Health Outcomes (ECHHO)
<http://www.leeds.ac.uk/uffaldrin/services/ECHHO/home.html>
- ▶ World Health Organisation (WHO)
<http://www.who.ch>
- ▶ European Organization for Research and Treatment of Cancer (EORTC)
<http://www.eortc.be>
- ▶ Cochrane Collaboration
<http://www.cochrane.co.uk>
- ▶ International Society for Pharmacoeconomics and Outcomes Research (ISPOR)
<http://www.ispor.org>
- ▶ Medical Outcomes Trust
<http://www.outcomes-trust.org>

WWW.MAPI-RESEARCH-INST.COM

QUALITY OF LIFE - INSTRUMENTS

- www.qlmed.org/
- **CANCERS** (All Cancers, Bladder, Brain, Breast, Cervical, Colon rectum, Esophageal, Head and Neck, Lung, Ovarian, Pancreatic, Prostate, Bone Marrow Transplant, Chemotherapy, Pediatric)
 - **CARDIOVASCULAR DISORDERS** (All heart diseases, Angina pectoris, Congestive heart failure, Hypertension, Myocardial infarction)
 - **NEUROLOGIC DISORDERS** (All neurological disorders, Dementia/Alzheimer, Epilepsy, Head Injury, Multiple sclerosis, Parkinson's Disease, Stroke)
 - **RESPIRATORY DISEASES** (All Chronic Respiratory Diseases, Asthma)
 - **RHEUMATOLOGICAL CONDITIONS** (Osteoarthritis, Rheumatoid arthritis)
 - **OTHER DISEASES** (Carpal Tunnel Syndrome, Cataract, Chronic sinusitis, Dermatological, Diabetes, HIV/AIDS, Inflammatory bowel syndrome, Kidney diseases, Peptic ulcers, Prostatic hyperplasia, Rhinocconjunctivitis, Sleep apnea, Varicose veins)
 - **PSYCHO-SOCIAL-SPIRITUAL DIMENSION** (Client satisfaction, Coping, Distress, Life satisfaction, Locus of Control, Mood, Social Behaviour, Social Support, Spiritual dimension, Well Being)
 - **SPECIAL POPULATIONS AND SPECIFIC PROBLEMS** (Children, Elderly patients, Terminal patient, Mental illness, Activity/Performance status, Cognitive Impairment, Alcoholism)

WWW.QLMED.ORG

QUALITY OF LIFE -- INSTRUMENTS

CD-ROM for Windows 95 & 98
<http://www.glammm.com/qlf>
 Email: qlm8@glamm.com

MARCELLO Tamburini
Quality of Life Assessment in Medicine
 GLAMM Interactive S.r.L.
 1998 3rd Edition

WWW.QLMED.ORG



INTERNET MONITORING SERVICE

INTERNET - <http://www.pjbpubs.co.uk/ppages/home.html>

pharmapages

Internet issues in the pharmaceutical industry

WWW.PJBPUBS.CO.UK -- PUBLISHER OF SCRIPT.

MARKETING DATA -- IMS

Address <http://www.ims-global.com/products/products.htm>

Drug Lifecycle
Web Description
Evaluated product analysis at every stage of the pharmaceutical lifecycle

Company and Market Studies
Web Description
Insights into corporate strategy and the dynamics of healthcare markets

Medical Information
Web Description
Past, present and future trends of healthcare markets, analysed by disease area

LifeCycle | R&D Focus | Drug Launches | Patents International | Cheminex Plus | Analogue

Pharmaceutical Company Profiles | Pharmaceutical Company Directory | Pharma Progress | Strategic Studies | Regional & Country Studies

Medical Horizons | Medical MIDAS | Medical World Review | Pharmacist & Beyond | Hospital Studies

World Review | MIDAS | Monthly MIDAS | PharmaFocus

WWW.IMS-GLOBAL.COM

REPORTS -- CANADIAN GOVERNMENT

Address <http://www.ccohta.ca/main.html>

Technology Reports

- INSI** Insulin Lipro: A Critical Evaluation (1999)
- INSI** Predictive Genetic Testing for Breast and Prostate Cancer (1999)
- INSI** Comparison of Drug Treatments for Multiple Sclerosis (1998)
- INSI** A Review of Therapies for Attention-Deficit/Hyperactivity Disorder (1998)
- INSI** Economic Analysis of Erythropoietin Use in Surgery (1998)
- INSI** Economic Evaluation Comparing Low Molecular Weight Heparin with Other Modalities for the Prevention of Deep Vein Thrombosis and Pulmonary Embolism Following Total Hip or Knee Arthroplasty (1998)
- INSI** Leukoreduction: The Techniques Used, Their Effectiveness and Costs (1998)

Stay Connected by using CCOHTA's Email Subscription Notice when Services Click here to register now.

WWW.CCOHTA.CA


HEALTH ECONOMIC EVAL DATABASE

Address <http://www.abpi.org.uk/links/heed.htm>

[AMRI] [CMRI] [HEED] [OHE] [PMCPA]

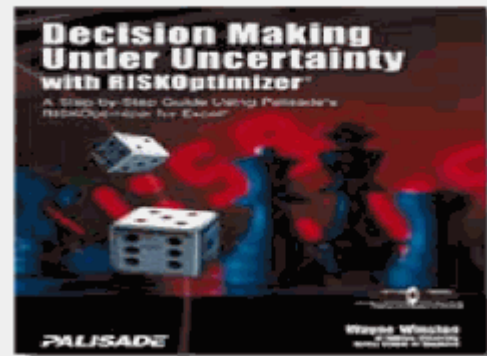
HEED - The Health Economic Evaluations Database

A specialised data service using CD-ROM, known as HEED (the Health Economic Evaluations Database), is a database that contains information on health economics, in particular studies of cost-effectiveness and other forms of economic evaluation of medicines and other treatments and medical interventions, with objective analysis of key articles.



WWW.ABPI.ORG.UK/LINKS

UNCERTAINTY



WWW.PALISADE.COM

The End

For further information contact:

William F. McGhan, PharmD, PhD
Professor, University of the Sciences in Philadelphia
Director, Graduate Program in Pharmacy Administration
Professor, Graduate Program in Health Policy
600 South 43rd Street
Philadelphia, PA 19104
Phone: 215-596-8852
Fax: 215-895-1100
E-mail: w.mcghan@usip.edu